

# **Best Three View Drawing Award**

## **Winner (EV)**



**#E08 Jilin University EV**

## **Second best**

**#E35 Prince of Songkla Univ. EV**

## **Third best**

**#E33 Univ. Gadjah Mada EV**

# #E08 Jilin University EV

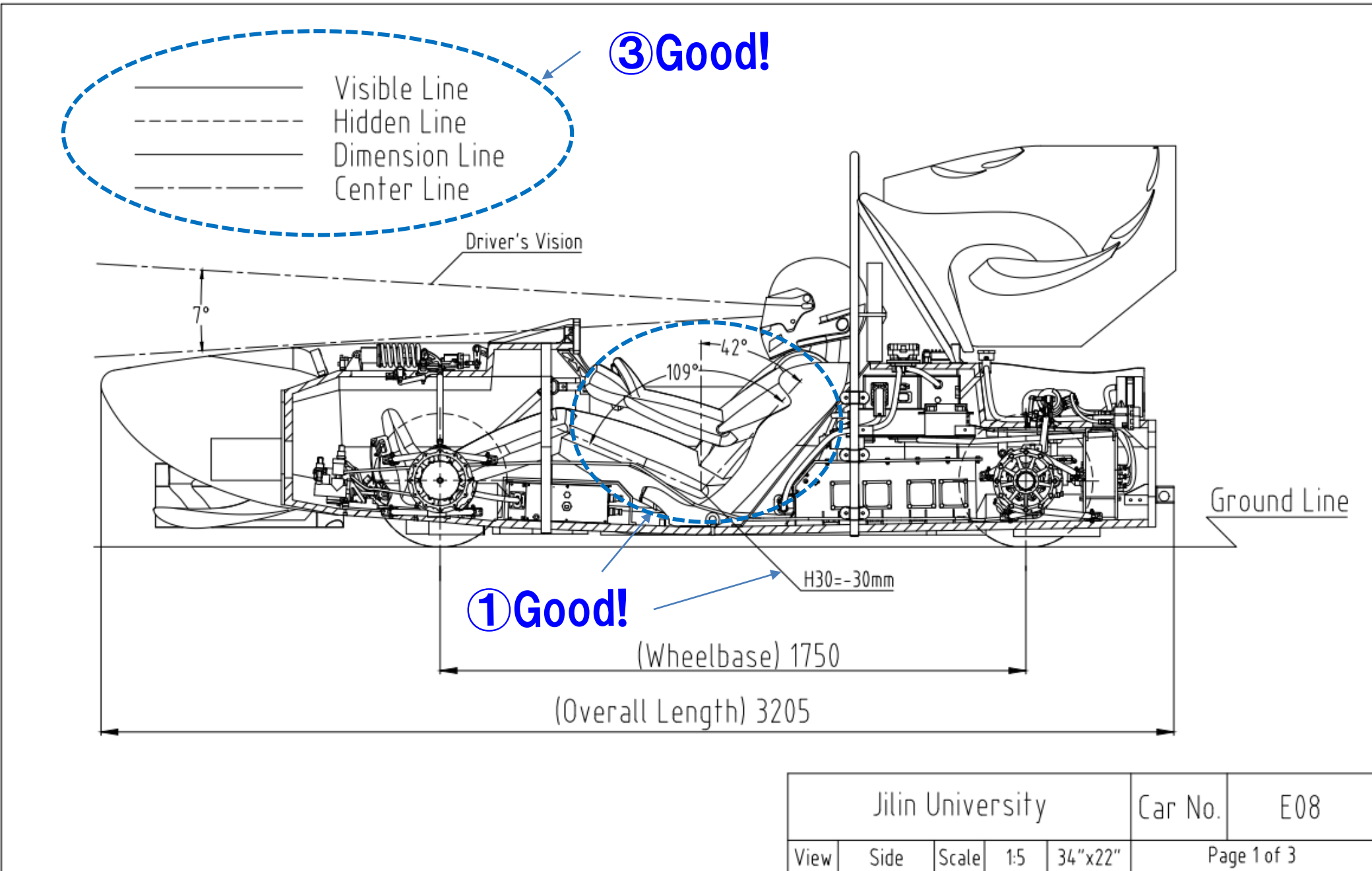
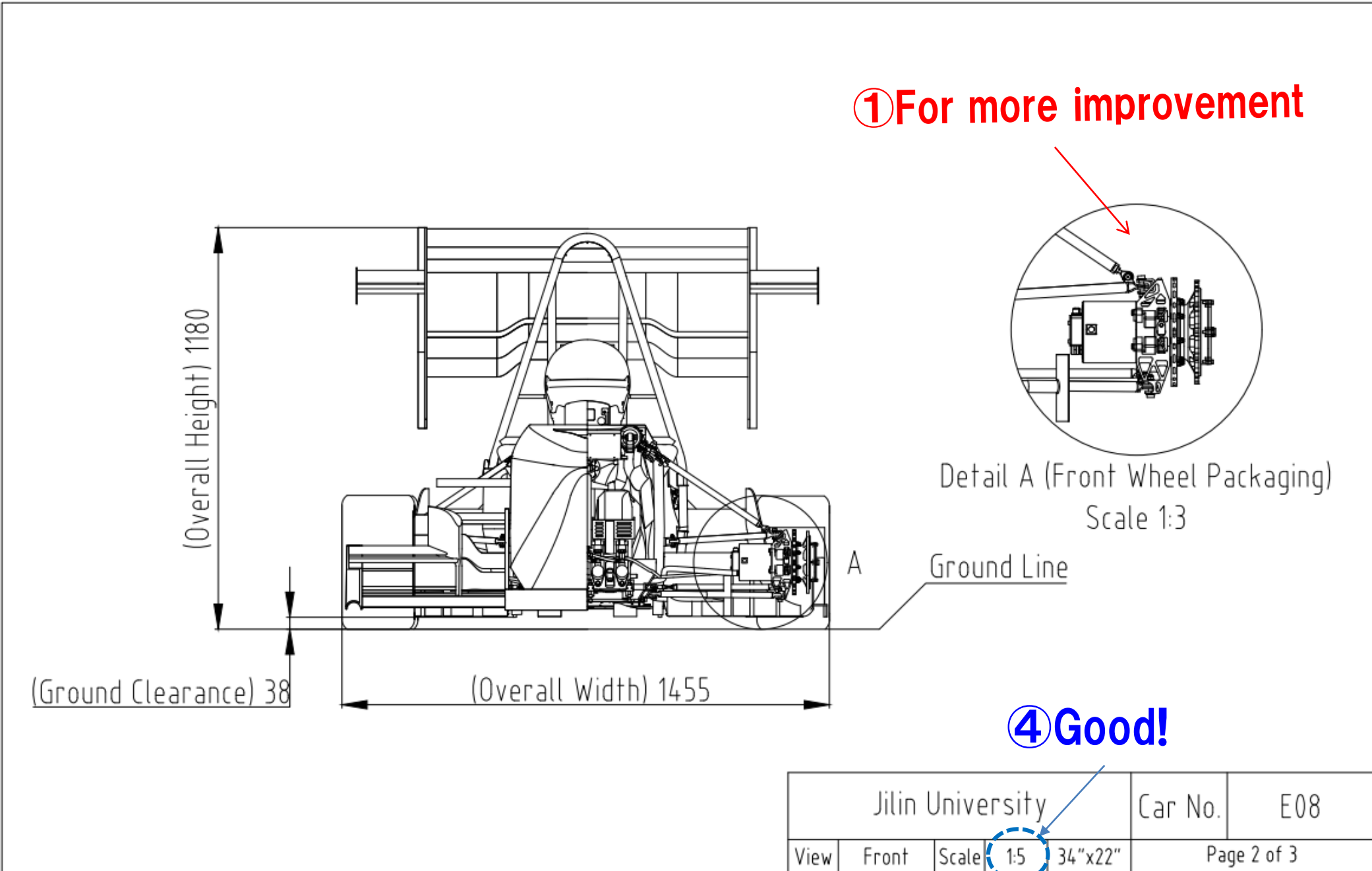
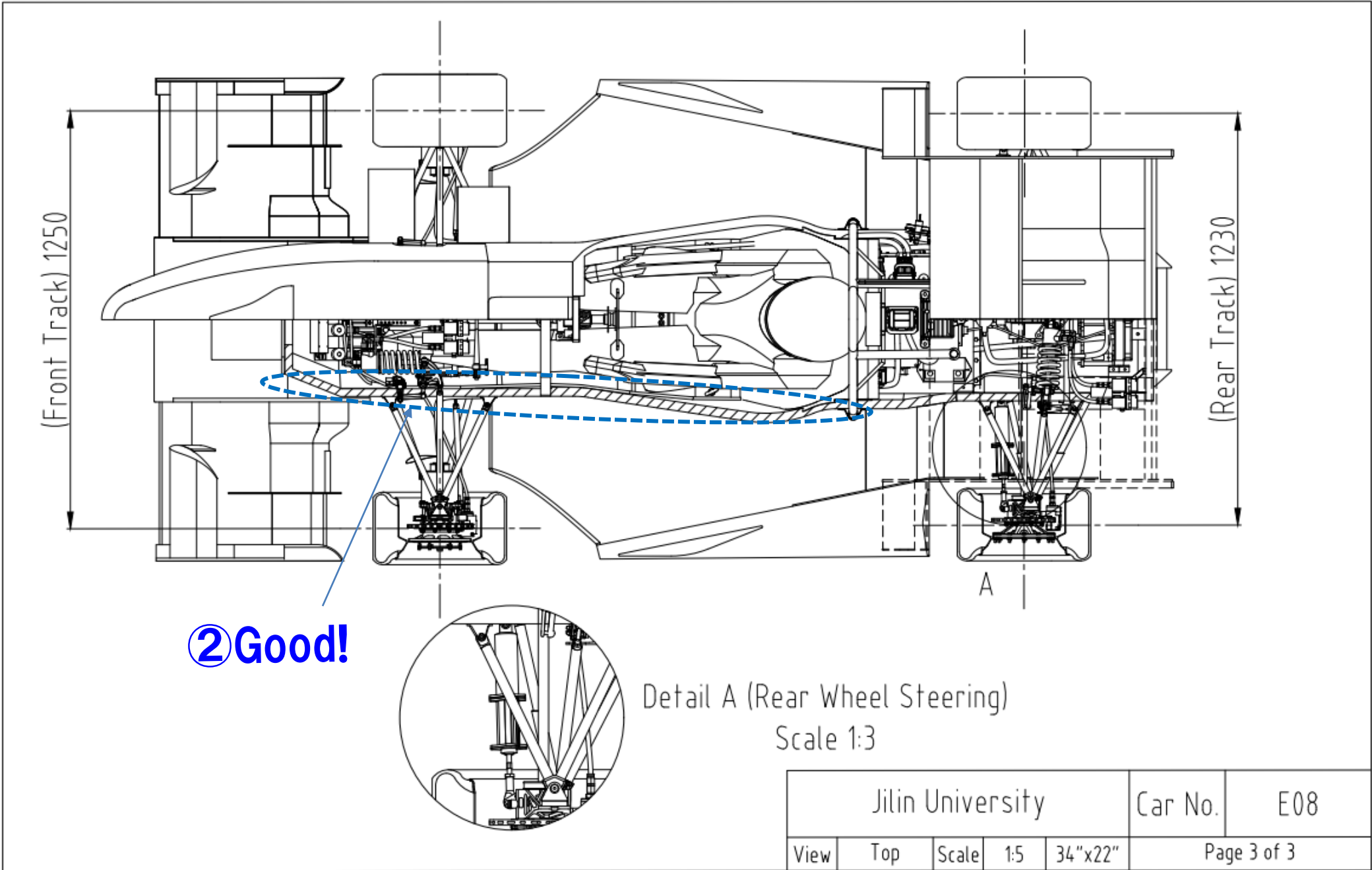
This drawing is the best!

## Noteworthy good points

- ① Ergonomic dimensions are shown
- ② Monocoque cross section line is shown.
- ③ Proper use of line variations
- ④ Recommended scale

## For more improvement

- ① No component name and drawing intension





# #E35 Prince of Songkla Univ. EV

This drawing is the second best!

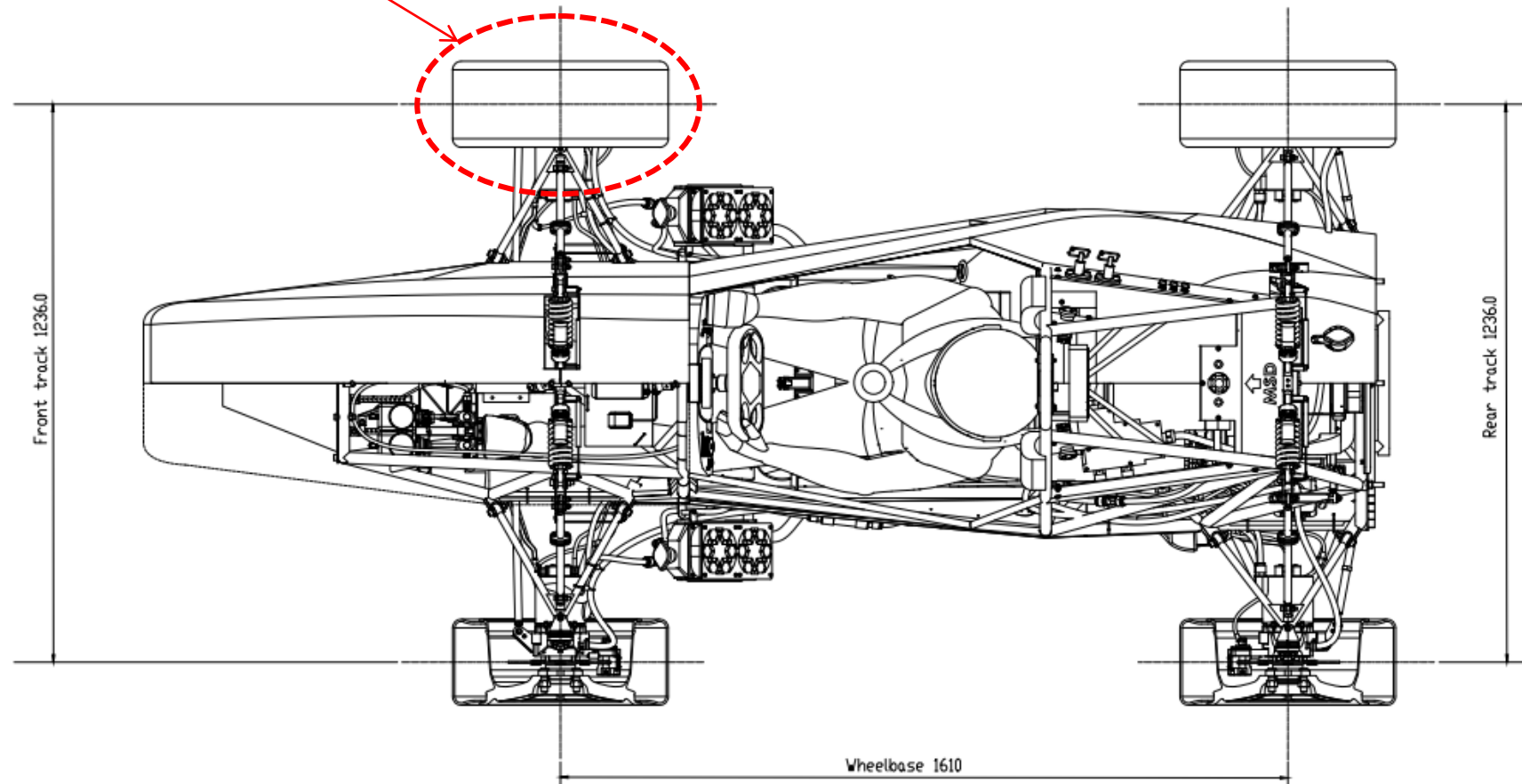
## Noteworthy good points

- ① Ergonomic dimensions are shown
- ② Component name is shown in detail drawing
- ③ Recommended scale

## For more improvement

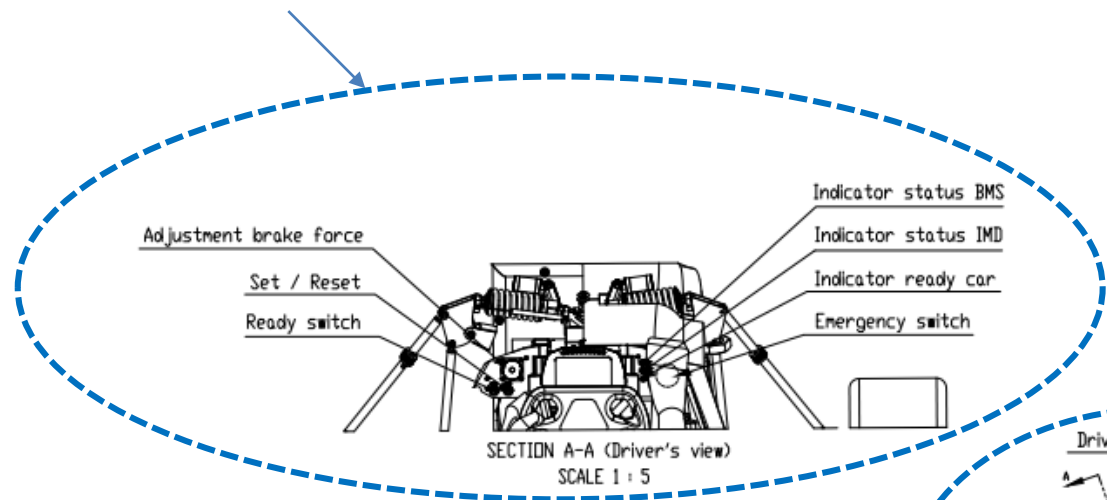
- ① Paper size is not specified
- ② Too many lines inside tires
- ③ Tire center line is not correct

③For more improvement

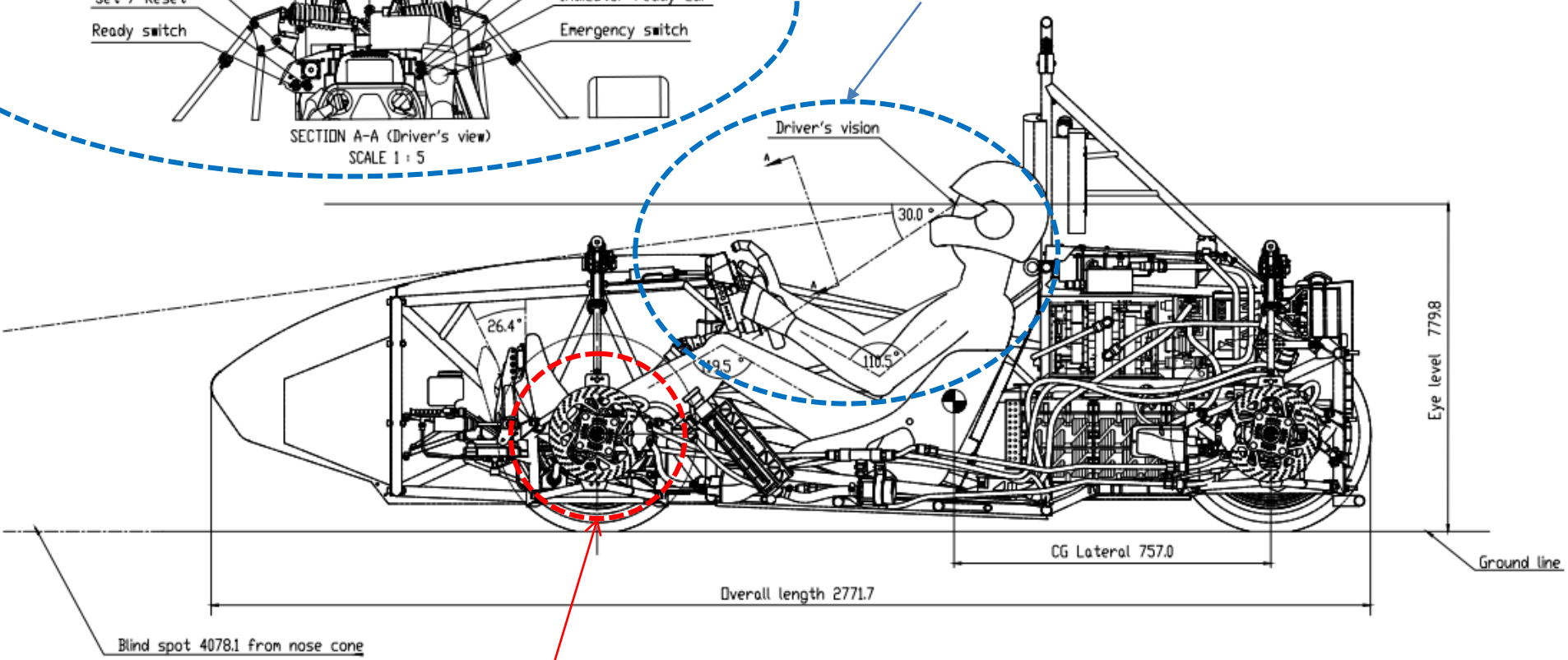


Prince of Songkla University		
Car number : E35	View : Top View	
Scale : 1:5	Sheet : 2/3	⊕ ◀

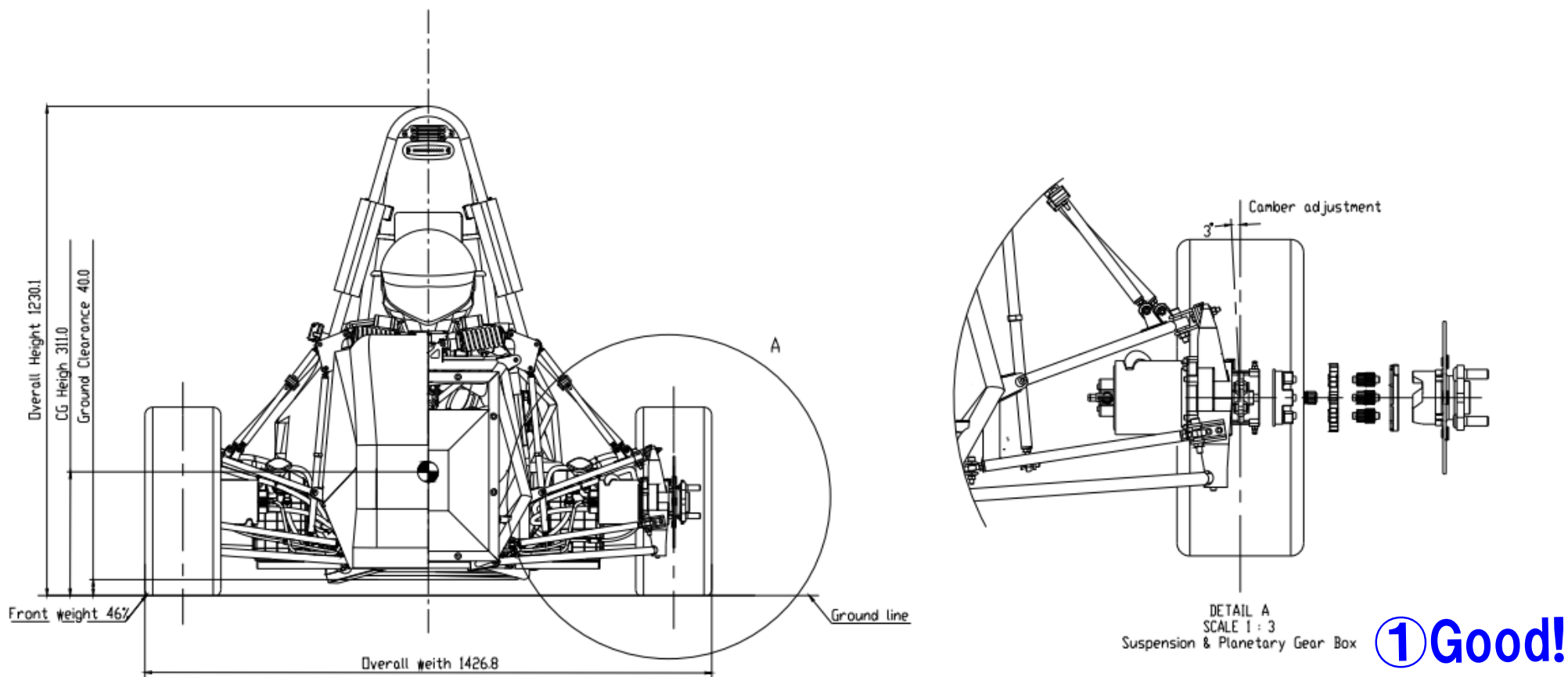
②Good!



①Good!



Prince of Songkla University		
Car number : E35	View : Side View	
Scale : 1:5	Sheet : 3/3	⊕ ◀



①For more improvement

Prince of Songkla University		
Car number : E35	View : Front View	
Scale : 1:5	Sheet : 1/3	⊕ ◀



#E33 Univ. Gadjah Mada EV  
This drawing is the third best!

Noteworthy good points

- ① Component name is shown in detail drawing
- ② Paper size is specified

For more improvement

- ① Back view should not be shown.
- ② Not recommended scale
- ③ Eye point definition is not correct.

