

Best Three View Drawing Award

Winner (ICV)



#C12 Doshisha University

Second best

#C07 Osaka University

Third best

#C02 Kobe University

#C12 Doshisha University

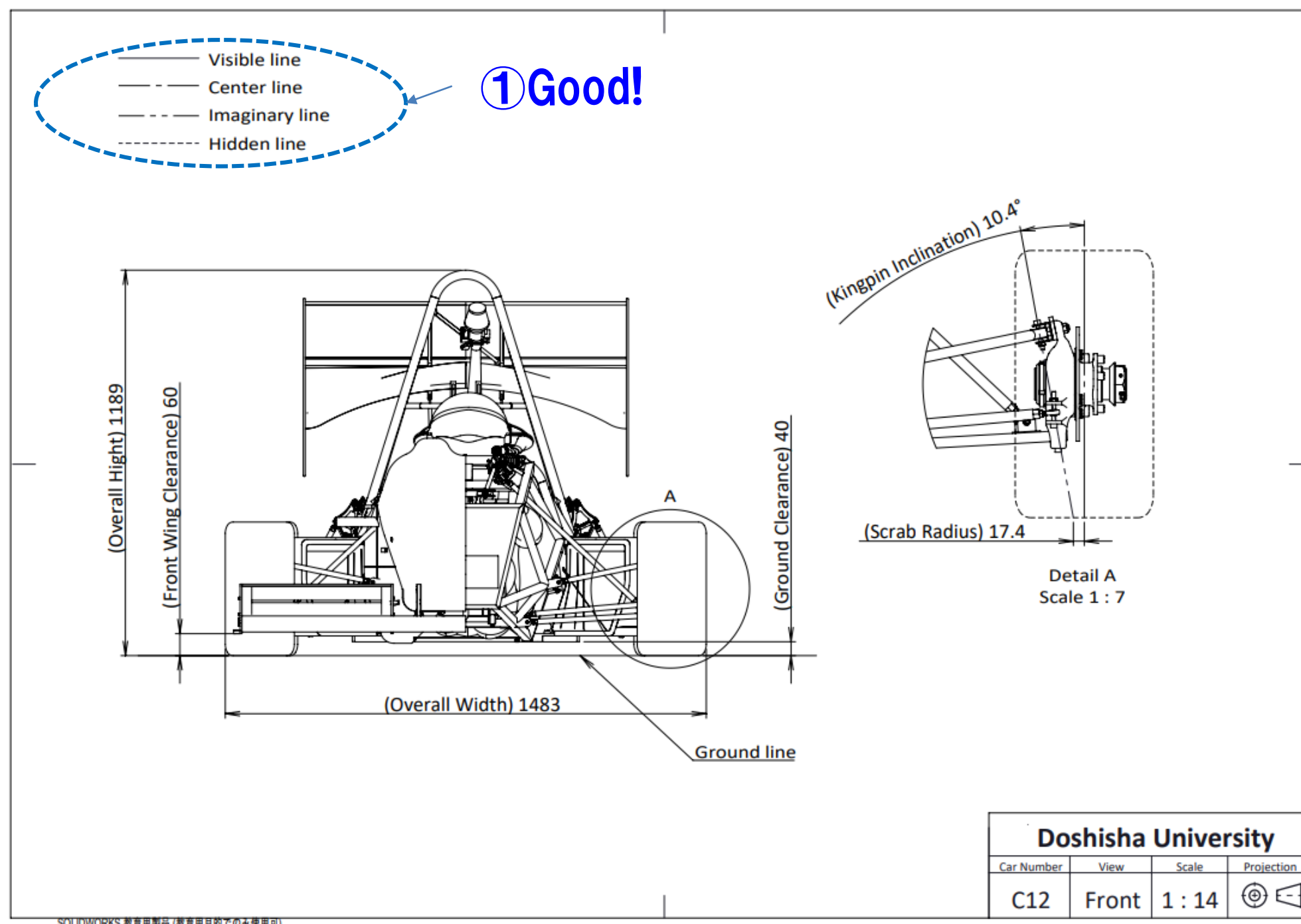
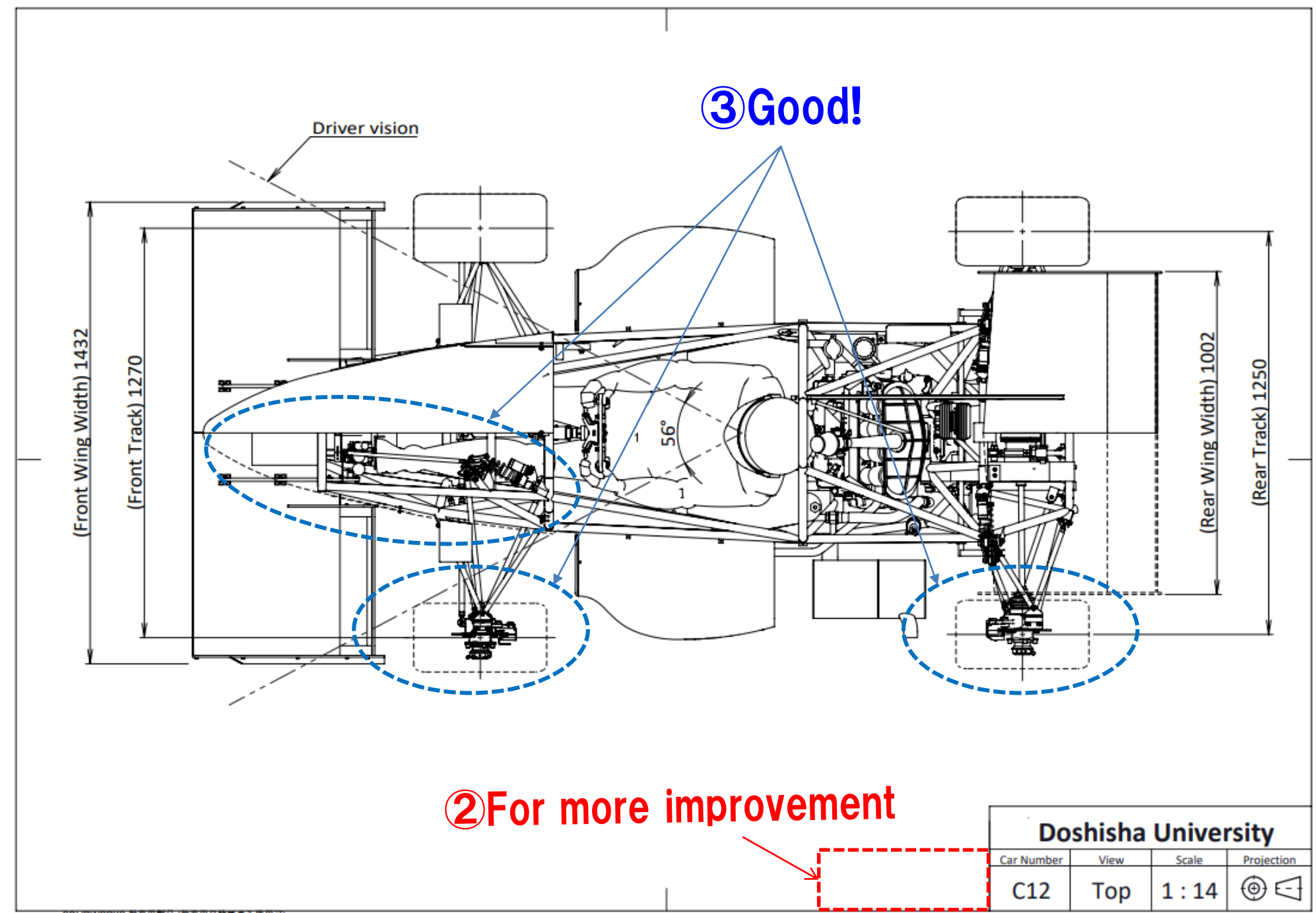
This drawing is the best!

Noteworthy good points

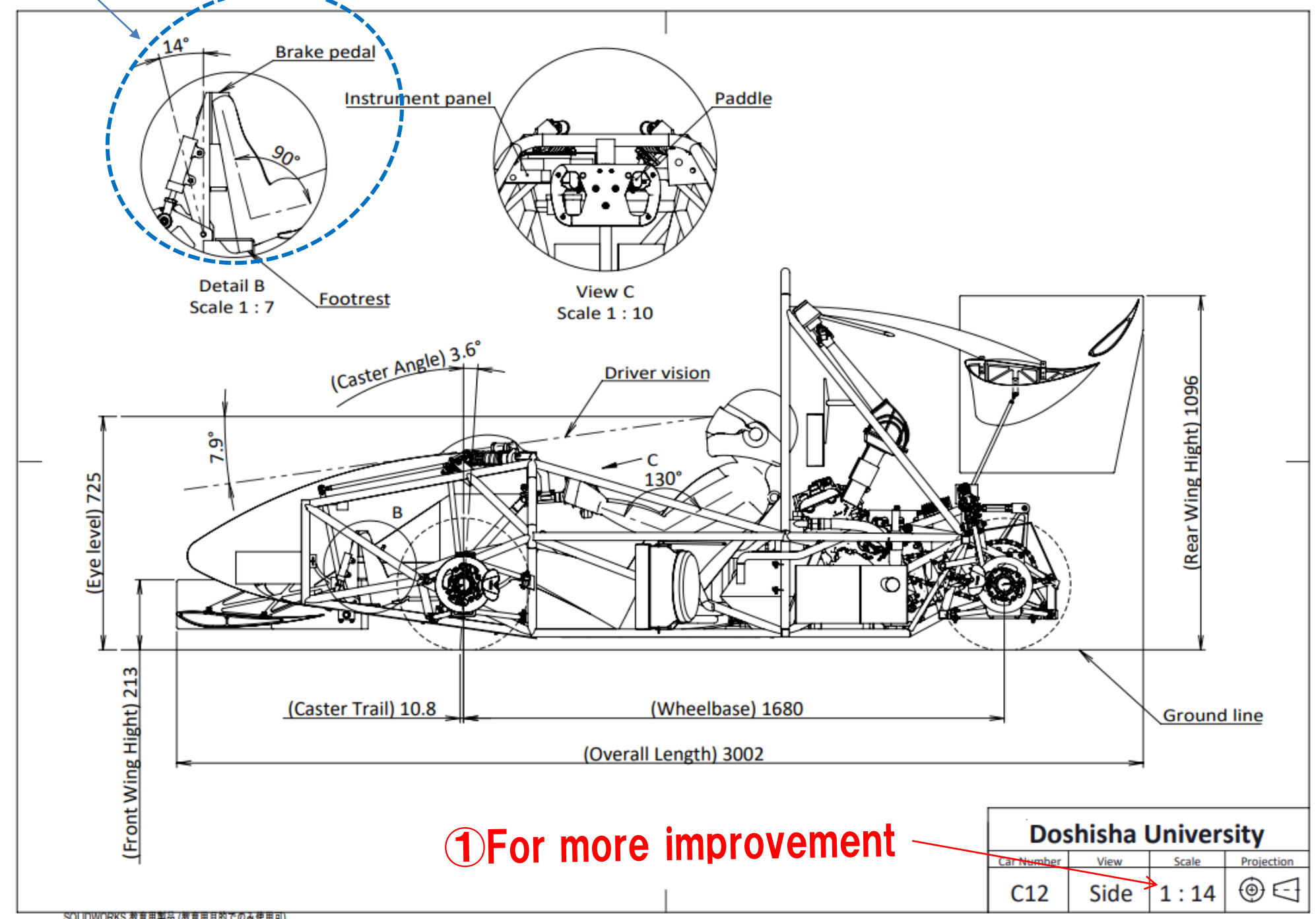
- ① Proper use of line variations
- ② Component name and ergonomic dimensions are shown
- ③ Well shown Frame and Upright structures with hidden lines

For more improvement

- ① Not recommended scale
- ② Paper size is not specified



② Good!



#C07 Osaka University

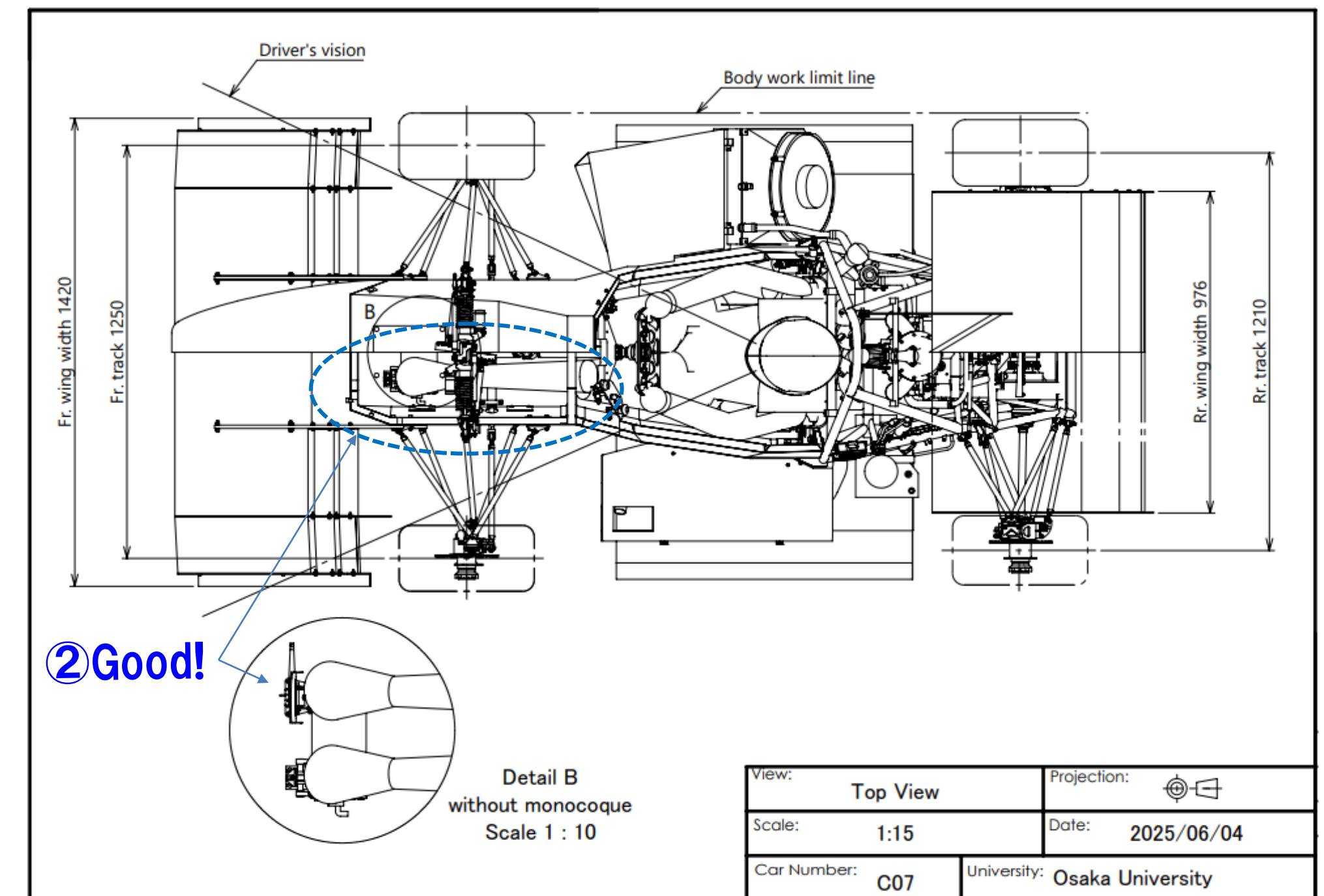
This drawing is the second best!

Noteworthy good points

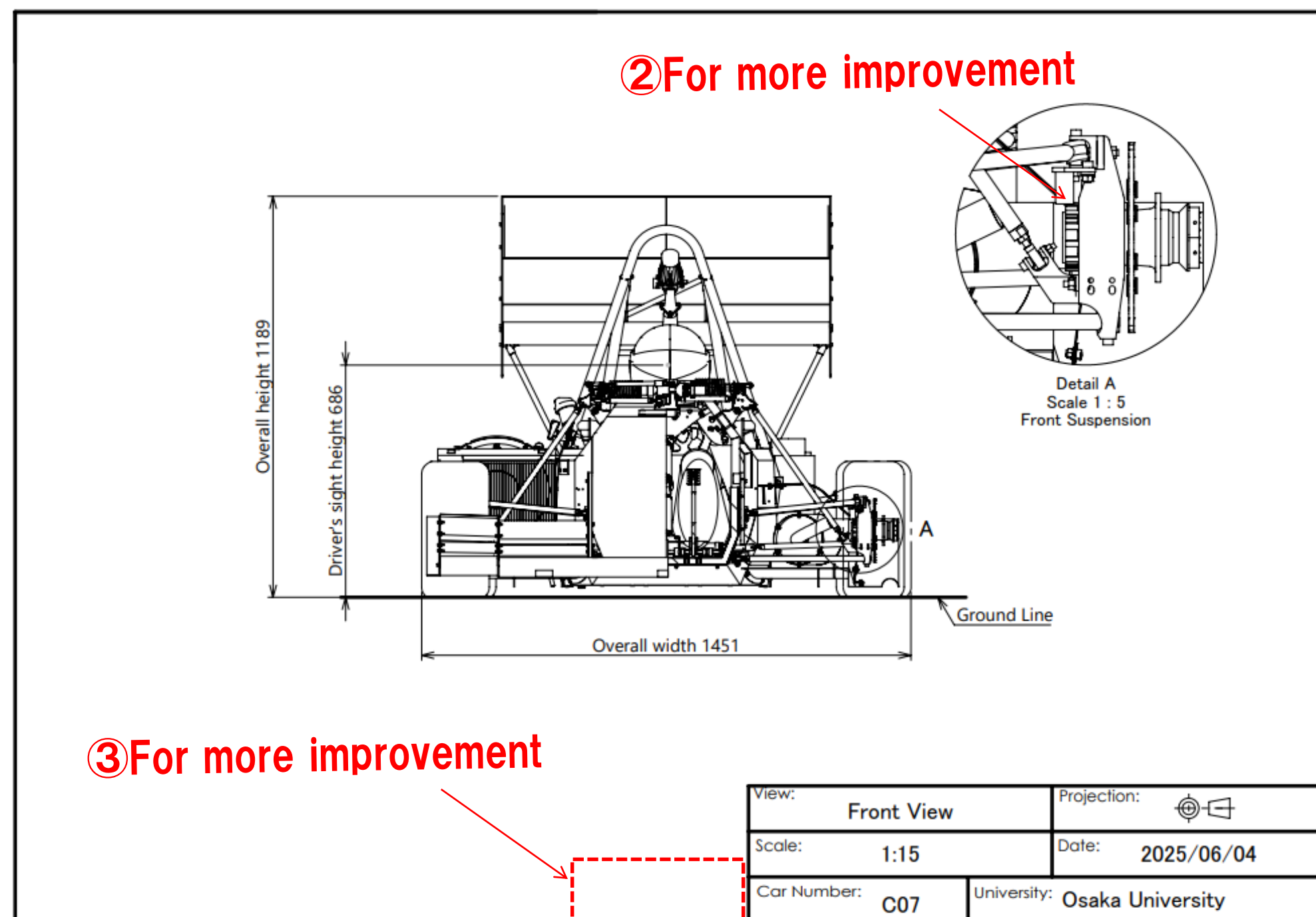
- ① Tire deformations are shown
- ② Well shown Frame structures with hidden lines
- ③ Ergonomic dimensions are shown

For more improvement

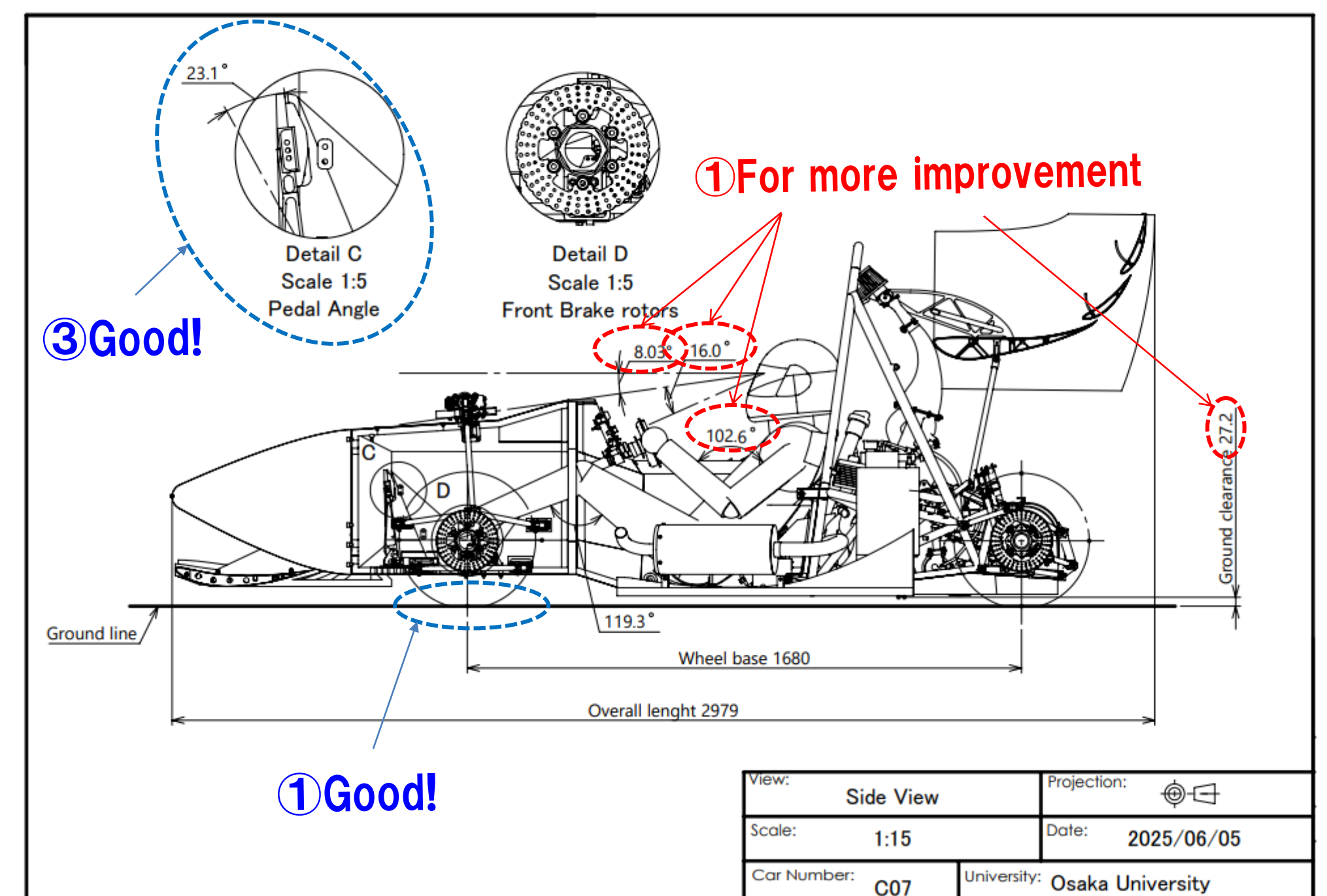
- ① Significant digits are not unified
- ② No component name and drawing intension
- ③ Paper size is not specified



SOLIDWORKS 教育用製品 (教育用目的でのみ使用可)



SOLIDWORKS 教育用製品 (教育用目的でのみ使用可)



SOLIDWORKS 教育用製品 (教育用目的でのみ使用可)

#C02 Kobe University

This drawing is the third best

Noteworthy good points

- ① Paper size is specified
- ② Well shown Frame and Cooling structures with hidden lines

For more improvement

- ① Not recommended scale
- ② No component name and drawing intension
- ③ Difficult to understand the detail

